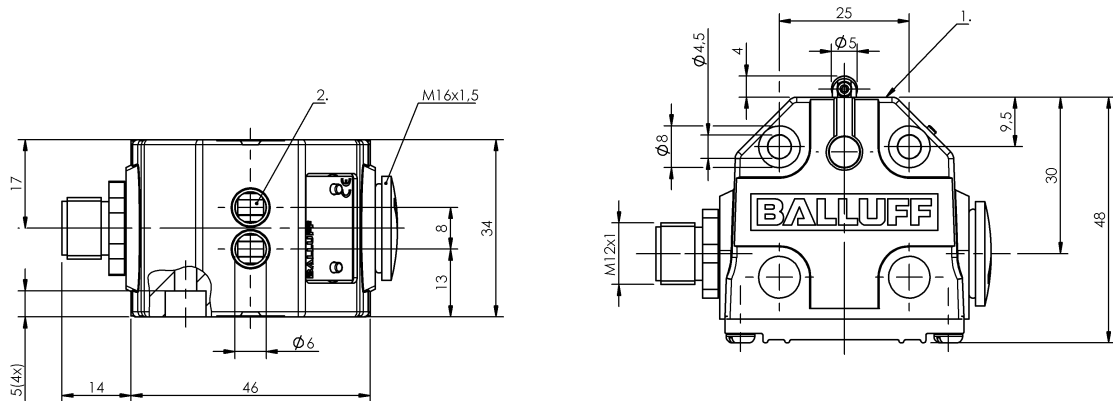


Mechanical Cam Switches  
**BNS 819-B02-R08-40-10-S80L-O**  
 Order Code: BNS056A

**BALLUFF**



1) Reference edge, 2) 1st pos.



**Basic features**

Approval/Conformity	CE UKCA WEEE
Basic standard	IEC 60947-5-1
Operating principle	1-2. Switch position: Mechanical
Version	Snap contact

**Display/Operation**

Function indicator	1-2. Switch position: None
--------------------	----------------------------

**Electrical connection**

Connection	M12x1-Flange male, 5-pin
Connection type	1. Switch position: Connector

**Electrical data**

Continuous current	1-2. Switch position: 4 A
Rated operating voltage Ue	1-2. Switch position: 250 V AC
Switching function mechanical	Single-pin changeover
Switching rate	1-2. Switch position: 200/min

**Environmental conditions**

Ambient temperature	-5...85 °C
IP rating	IP67

**Functional safety**

B10d (EN ISO 13849-1)	BSE 69.1: 10 mil. switching cycles
-----------------------	------------------------------------

**Material**

Housing material	Aluminium, Anodized
Housing material, surface protection	Anodized
Material contacts	1-2. Switch position: Silver
Plunger material	1-2. Switch position: 1.4034 stainless steel

**Mechanical data**

Approach direction	longitudinal, parallel to attachment surface
Approach speed	1-2. Switch position: 60 m/min
Distance cam - reference edge	1-2. Switch position: 2.30...2.80 mm
Flange, feed-through	None
Installation	Vertical
Life expectancy mechanical	1-2. Switch position: 10 mil. switching operations
Number of switching positions	2x Roller Mechanical
Plunger style	1-2nd switch position: Roller
Switch actuation force	1-2. Switch position: 8 N
Switching element	1-2. Switch position: BSE 69.1

**Range/Distance**

Reproducibility	1-2. Switch position: ±0.05 mm
-----------------	--------------------------------

## Connector Drawings



View of connector side

## Wiring Diagrams

